

## Surface LED Fixtures

- Universal voltage (120-277 VAC)
- No ballast, includes direct wire LED tubes
- 50,000 hour lifetime

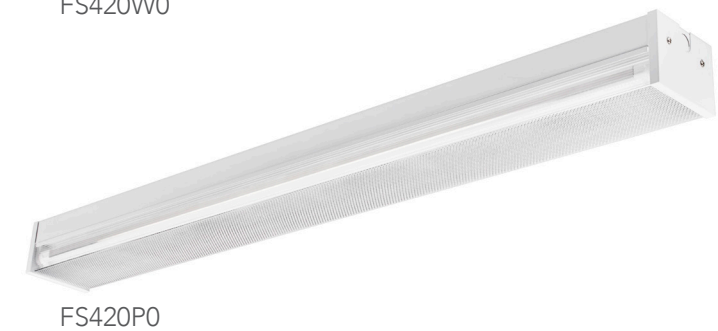
Toggled fixtures are designed to be compatible with any toggled LED direct wire tube.

### Outstanding Product Performance

- Provides up to 60% energy savings
- Eliminates ballasts and maintenance costs
- Designed for direct connection to building AC power, voltage 120-277 VAC
- Operating temperature -20 to 45° C

### Superior Quality of Light

- Consistent color rendering, 80 CRI minimum
- UL listed



### Commercial-grade

- Reliable start during cold temperatures
- All metal construction
- Durable white powder-coated finish

## Ordering Information

Fixture	Type	Length	# Lamps	Style	Lens	Wire Termination	Tube Model #
<input type="text"/>	<input type="text"/>	<input type="text"/>	<input type="text"/>	<input type="text"/>	<input type="text"/>	<input type="text"/>	<input type="text"/>
F = Fixture	S = Strip/ Surface	4 = 4 feet	2 = 2 lamps	0 = Standard	P = Prismatic W = Wireguard	0 = None	See next page



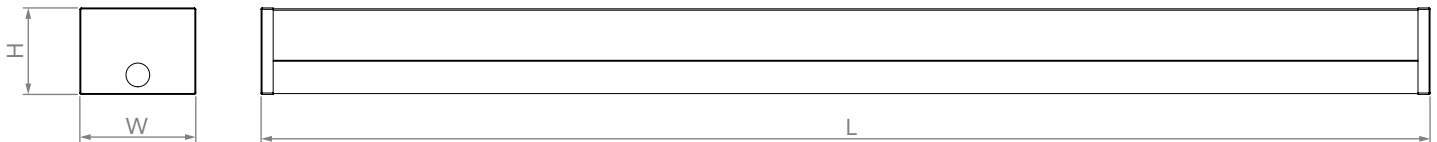
# Surface LED Fixtures

## Specifications

Model No.	Length	Input Voltage	Total Power (Watts)	Total Lumens	Efficacy	CRI	CCT	PF
FS420P0-E416-30310	4 feet	120-277 VAC	32	2,940	92	≥80	3000K	>0.9
FS420P0-E416-40310	4 feet	120-277 VAC	32	2,940	92	≥80	4000K	>0.9
FS420P0-E416-50310	4 feet	120-277 VAC	32	2,940	92	≥80	5000K	>0.9
FS420P0-E416-65310	4 feet	120-277 VAC	32	2,940	92	≥80	6500K	>0.9
FS420P0-A423-40230	4 feet	120-277 VAC	46	4,340	95	≥80	4000K	>0.9
FS420P0-A423-50230	4 feet	120-277 VAC	46	4,340	95	≥80	5000K	>0.9
FS420W0-E416-30310	4 feet	120-277 VAC	32	4,200	131	≥80	3000K	>0.9
FS420W0-E416-40310	4 feet	120-277 VAC	32	4,200	131	≥80	4000K	>0.9
FS420W0-E416-50310	4 feet	120-277 VAC	32	4,200	131	≥80	5000K	>0.9
FS420W0-E416-65310	4 feet	120-277 VAC	32	4,200	131	≥80	6500K	>0.9
FS420W0-A423-40230	4 feet	120-277 VAC	46	6,200	135	≥80	4000K	>0.9
FS420W0-A423-50230	4 feet	120-277 VAC	46	6,200	135	≥80	5000K	>0.9

Note - Performance for prismatic models are estimated based upon 70% efficiency when utilizing a prismatic lens.

## Dimensions



Fixture Model No.	Length	Width	Height
FS420P0	48.5in (1231mm)	4.8in (122mm)	3.6in (91mm)
FS420W0	48.5in (1231mm)	4.8in (122mm)	3.6in (91mm)

**Disclaimer:** toggled reserves the right to make changes to specific items and/or to discontinue any product at any time without notice or obligation and will not be liable for any consequences resulting from the use of this publication.